

VIOLIN 1

GEORGE GERSHWIN

# LULLABY

for string orchestra

*arranged for string orchestra by  
Jeff Manookian*

Windsor Editions



# VIOLIN 1

# LULLABY

for String Orchestra

GEORGE GERSHWIN

arranged for string orchestra

by Jeff Manookian

Violin I

**Adagio dolce**  
con sord.

**Andante cantabile**

*ppp* *pp* *ppp*

9 **A** *mp*

16 **B** *p*

21 *poco rit.* **C** *a tempo con moto*  
*mf* *mp* *p* *mf* *p*

27 *mf* *pp* *mf* *mp*

32 *rit.* *a tempo*

## LULLABY

37 **(D)** Solo

*p* *p* *mp* *p* *mp* *p*

42 **(E)** *mf* *mf*

47 *mp* *p* *mp* *p* *pp* *p*

53 **(F)** *mp* *mf* *p* *mf* *rit.* *a tempo* *rit.* *a tempo*

58 *rall.* *rall.* 3

63 **(G)** Solo *p* *p* *a tempo* *f*

69 *mf* *sfz* *f* **H**

69 *mf* *sfz* *f*

74 *mp* *p* *mp* 3

74 *mp* *p* *mp* 3

79 **I** *a tempo* Solo *espress.* *p*

79 *p* *pp* *mp* *pp* **I** *a tempo* Solo *espress.* *p*

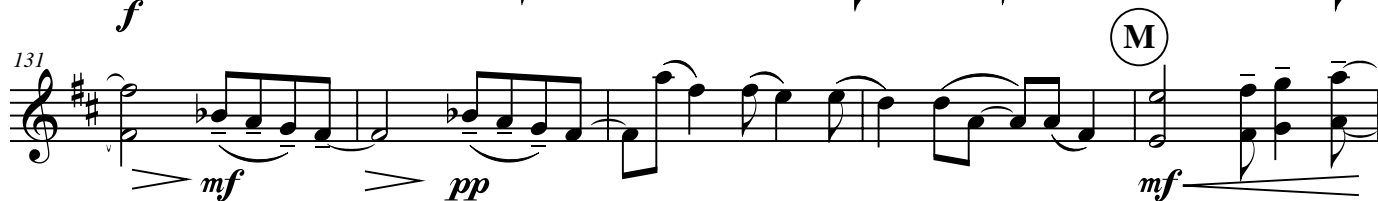
86 *rit.* **J** *a tempo* *p* *a tempo* *p*

86 *rit.* **J** *a tempo* *p* *a tempo* *p*

92 *p* *rit.* *mp* 2

92 *p* *rit.* *mp* 2

## LULLABY

(K) **Dolcissimo****Allegretto**

3

VIOLIN 2

GEORGE GERSHWIN

# LULLABY

for string orchestra

*arranged for string orchestra by  
Jeff Manookian*

Windsor Editions

# LULLABY

## GEORGE GERSHWIN

*arranged for string orchestra*

by Jeff Manookian

con sord.

7 **Andante cantabile** **A**

*p* *mp*

18

23 *poco rit.* **C** *a tempo con moto*

*p* *mf* *p* *mf*

28

*pp* *mf* *mp*

33 *pp* *rit.* *a tempo* **D** *p* *mp* *p*

[illegible]



Violin 2 score for "LULLABY". The score is written in treble clef with a key signature of two sharps (F# and C#). It consists of nine staves of music, each starting with a measure number. The music features various dynamics, articulations, and performance instructions.

Measure 44: **E** *mf* *mp*

Measure 49: *p* *pp* *p* *p* **F** *tutti* *mp*

Measure 54: *mf* *p* *mf* *rit.* *a tempo*

Measure 59: *rall.* *a tempo* *f* *pp*

Measure 65: **G** *p* *mf*

Measure 70: *sfz* *f* **H**

Measure 75: *mp* *p* *mp* *p*

Measure 80: *pp* *mp* *pp* *p* **I** *a tempo* *Solo*

Measure 86: *rit.* *tutti* *a tempo* *p* *pp* **J** *2*

94 *rit.* **2**

*p* *mp* *pp*

103 **(K) Dolcissimo**

*p* *mf*

109 *mp* *p*

113 *mp* *mf* *pp*

117 1. *rit.* *a tempo* 2.

*mf* *mp* *pp*

122 *rall.* *scherzando* *pizz.* **(L) Andante cantabile** *arco*

*mf* *p* *f*

126 *con forza*

131 **(M)**

*mf* *pp* *mf*

136 *f* *pp*

141

(N)

pizz. arco pizz. arco

*p*

Staff 141-146: Treble clef, key of D major. Measures 141-146. Measure 141 starts with a half note D4. Measures 142-146 are eighth notes: E4, F#4, G4, A4, B4, C5, D5, C5, B4, A4, G4, F#4, E4, D4. Measure 142 has a circled 'N' above it. Measure 143 has 'pizz.' above it. Measure 144 has 'arco' above it. Measure 145 has 'pizz.' above it. Measure 146 has 'arco' above it. Dynamics: *p* at measure 142, crescendo to measure 144, decrescendo to measure 146.

147

*mf*

Staff 147-151: Treble clef, key of D major. Measures 147-151. Measure 147 starts with a half note D4. Measures 148-151 are eighth notes: E4, F#4, G4, A4, B4, C5, D5, C5, B4, A4, G4, F#4, E4, D4. Dynamics: *mf* at measure 147, crescendo to measure 151.

152

(O)

*p*

Staff 152-156: Treble clef, key of D major. Measures 152-156. Measure 152 starts with a half note D4. Measures 153-156 are eighth notes: E4, F#4, G4, A4, B4, C5, D5, C5, B4, A4, G4, F#4, E4, D4. Measure 152 has a circled 'O' above it. Dynamics: *p* at measure 152, crescendo to measure 156.

157

*ppp*

//

Staff 157-161: Treble clef, key of D major. Measures 157-161. Measure 157 starts with a half note D4. Measures 158-161 are eighth notes: E4, F#4, G4, A4, B4, C5, D5, C5, B4, A4, G4, F#4, E4, D4. Measure 157 has a circled 'O' above it. Dynamics: *ppp* at measure 157, crescendo to measure 161. Double bar line at the end of measure 161.

162

**Allegretto**

pizz. *p*

Staff 162-166: Treble clef, key of D major. Measures 162-166. Measure 162 starts with a half note D4. Measures 163-166 are eighth notes: E4, F#4, G4, A4, B4, C5, D5, C5, B4, A4, G4, F#4, E4, D4. Measure 162 has 'pizz.' above it. Dynamics: *p* at measure 162, crescendo to measure 166.



VIOLA

GEORGE GERSHWIN

# LULLABY

for string orchestra

*arranged for string orchestra by  
Jeff Manookian*

Windsor Editions

VIOLA

# LULLABY

for String Orchestra

GEORGE GERSHWIN

arranged for string orchestra

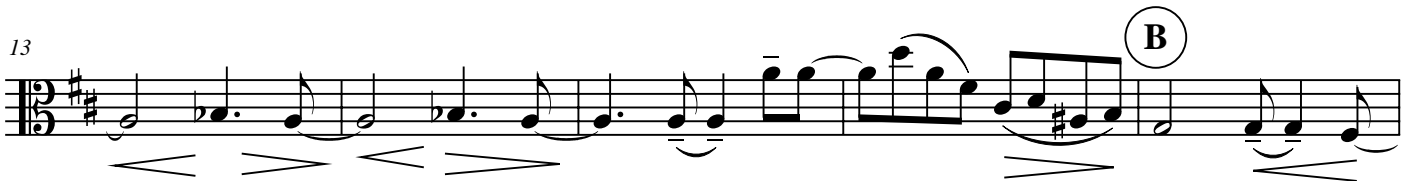
by Jeff Manookian

**Adagio dolce**

con sord.



7 **Andante cantabile** (A)



39 *p* *mp* *p*

45 **E** *mf* *mp* *p* *pp* *p*

51 **F** *mp* *mf* *rit.* *a tempo*

58 *rall.* *a tempo* *f*

64 **G** *pp* *p* *mf*

70 **H** *sfz* *f*

75 *mp* *p* *mp* *p* *pp*

81 **I** *a tempo* *mf* *pp* 4 4

89 **J** *a tempo* Solo *p* *pp* *mp*

95 *tutti* *rit.* **2** *p* *mp* *pp*

105 **K** *Dolcissimo* *p* *mf* *mp*

111 *p* *mp* *mf*

116 1. *rit.* *a tempo* *pp* *mf* *mp*

121 2. *rall.* *schierzando* *pizz.* *p* *mf*

125 **L** *Andante cantabile* *arco* *f*

130 **M** *mf* *pp* *mf*

136 *f* *mf* *pp*



141

(N) pizz.

*p*

146

arco

*mf*

151

(O)

*p*

157

*ppp*

162

**Allegretto**

pizz.

*p*



CELLO

GEORGE GERSHWIN

# LULLABY

for string orchestra

*arranged for string orchestra by  
Jeff Manookian*

Windsor Editions

# CELLO

# LULLABY

for String Orchestra

**GEORGE GERSHWIN**  
*arranged for string orchestra  
 by Jeff Manookian*

**Adagio dolce**  
*con sord.*

**Andante cantabile**

8

13

18

22

28

33

**A**

**B**

**C**

**D**

*ppp*

*pp*

*ppp*

*mp*

*p*

*poco rit.*

*a tempo con moto*

*p*

*mf*

*p*

*mf*

*pp*

*mf*

*mp*

*rit.*

*a tempo*

*pizz.*

*p*

38 *p*

44 arco **E** *mf* *mp* *p*

50 pizz. *pp* *p* *mp* arco *mf* pizz. arco *p*

56 rit. *mf* *a tempo* *rall.*

62 *a tempo* *f* *pp* **G** 3 *p*

69 3 *mf* *f* **H**

75 *mp* *p* *mp*

79 **I** *a tempo* *p* *pp* *mp* *pp* 4

88 **J** *a tempo* *p* *pp* 4

96 *rit.* *a tempo* Solo *tutti*

*p* *mp* *pp* *pp*

105 (K) **Dolcissimo**

*p* *mf*

111

*p* *mp* *mf* *pp*

117 1. *rit.* *a tempo* 2. *rall.*

*mf* *pp* *mf*

123 *scherzando* **(L) Andante cantabile**

*p* *f*

128

*mf* *pp*

133 **(M)**

*mf* *f*

138

*mf* *pp*

143 **N** pizz. arco pizz. arco *p*

147 *mf*

152 Solo rall. **O** tutti pizz. *pp*

156 arco *ppp*

161 **Allegretto** pizz. *p* 3 *p*

Detailed description of the musical score: The score is written for a cello in bass clef. The key signature has two sharps (F# and C#). The first system (measures 143-147) starts with a circled 'N' above measure 143. The notation alternates between 'pizz.' (pizzicato) and 'arco' (arco). The dynamic marking 'p' is below measure 143. The second system (measures 147-151) starts with measure 147 and has a dynamic marking 'mf' below measure 147. The third system (measures 152-155) starts with measure 152. It includes a 'Solo' marking above measure 152, a 'rall.' marking above measure 154, and a circled 'O' above measure 155. The dynamic marking 'pp' is below measure 155. The fourth system (measures 156-160) starts with measure 156 and has a dynamic marking 'ppp' below measure 156. The fifth system (measures 161-165) starts with measure 161. It includes a 'pizz.' marking above measure 161, a dynamic marking 'p' below measure 161, a triplets sign '3' above measure 163, and a dynamic marking 'p' below measure 164. The tempo marking 'Allegretto' is above measure 161. There is a repeat sign (//) above measure 161.





CONTRABASS

GEORGE GERSHWIN

# LULLABY

for string orchestra

*arranged for string orchestra by  
Jeff Manookian*

Windsor Editions

# CONTRABASS

# LULLABY

for String Orchestra

GEORGE GERSHWIN

arranged for string orchestra

by Jeff Manookian

**Adagio dolce**

**Andante cantabile**

10 16 22 29 35 43 49 56 62

pizz. **5** arco **A** **mp** **pizz.** **B** **p** **arco** **C** **a tempo con moto** **mf** **p** **mf** **pp** **mf** **pizz.** **mp** **a tempo** **pizz.** **D** **3** **p** **p** **E** **mf** **mp** **F** **arco** **p** **pp** **p** **mp** **mf** **rit. pizz.** **a tempo** **p** **mf** **rall.** **G** **a tempo** **f** **pp** **arco** **p**

69 **(H)** *mf* *f* *mp* *p* *mp*

79 **(I)** *a tempo* *p* *pp* *mp* *pp* **(K) Dolcissimo**

89 **(J)** *a tempo* *p* *pp* *mp* *pp* **(K)** *pp*

108 *p* *mp* *p* *pp*

117 1. *rit.* *a tempo* *pizz.* 2. *rall.* *scherzando* *mf*

124 *pizz.* **(L) Andante cantabile** *arco* *p* *f*

131 *pizz.* **(M)** *arco* *mf* *f*

137 *pizz.* *mf* *pp*

143 **(N)** *arco* *pizz.* *arco* *pizz.* *p* *mf*

148 *arco*

154 **(O)** *Allegretto* *pizz.* *p* *p*

